

# **VAST Central Management Software**

## **Quick Installation Guide**

### **Table of Contents**

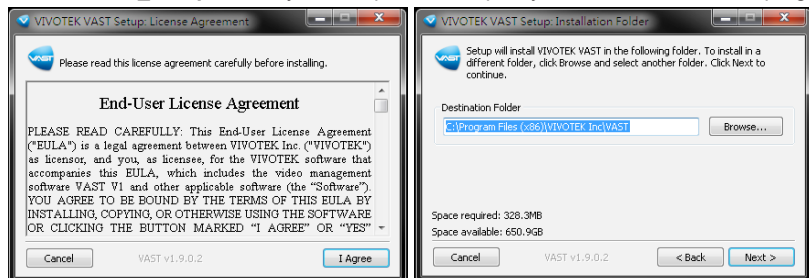
---

<i>VAST Installation</i> .....	2
Installing the VAST Software .....	2
<i>VAST LiveClient Configuration</i> .....	4
Activating VAST LiveClient .....	4
VAST LiveClient User Interface .....	4
How to Add Devices .....	5
How to Add Sub-stations .....	7
<i>VAST Playback Configuration</i> .....	9
Activating VAST Playback .....	9
VAST Playback User Interface .....	9
How to View Recorded Video .....	10

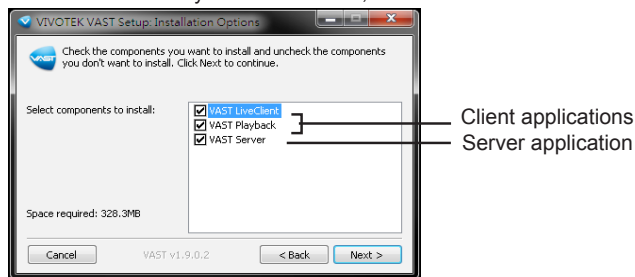
# VAST Installation

## Installing the VAST Software

1. Run **VAST\_Setup.exe** on your computer, and specify a location to install the program.

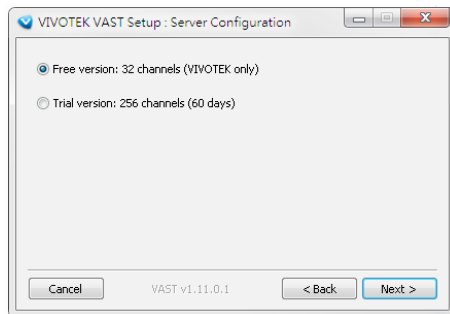


2. Select the items you want to install, then click **Next** to continue.



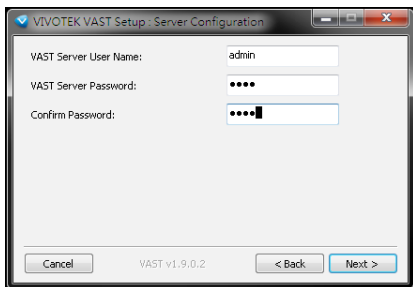
3. You can install the free 32 CH version, or, select the Trial 256 CH version, then click **Next** to continue.

- The trial version will expire after 60 days. You can then contact VIVOTEK's sales representatives to purchase the official software license to continue using the software.

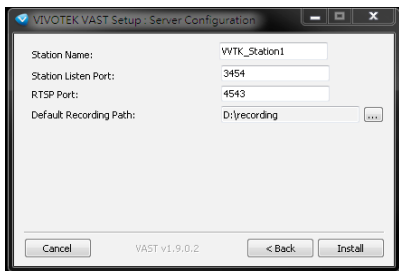


In the LiveClient window, you can go to **Help > License**, and click on **Generate License Update Request**. You can send the request file to VIVOTEK's sales representatives to facilitate the purchase process.

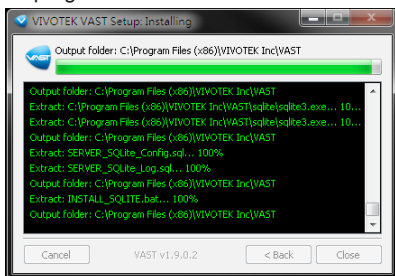
#### 4. Assign a username and password for the VAST Server.



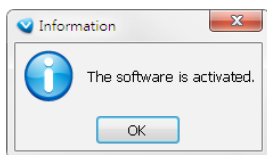
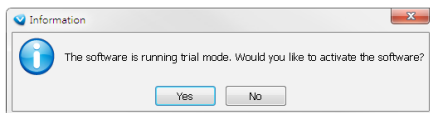
- a. VAST server will by default store the recorded media file under c:\Recording. Click **Browse ...** to change the path if you plan to store the data under another path. Then click **Next** to continue.



- b. Wait for the installation process to complete, then click **Close** to exit the installation program.



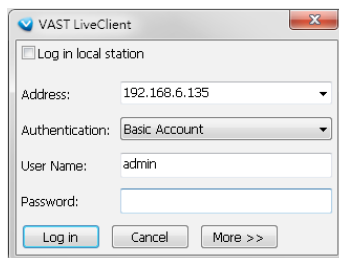
If you installed the trial version, you will be prompted to activate the trial license. Click **Yes** to start.



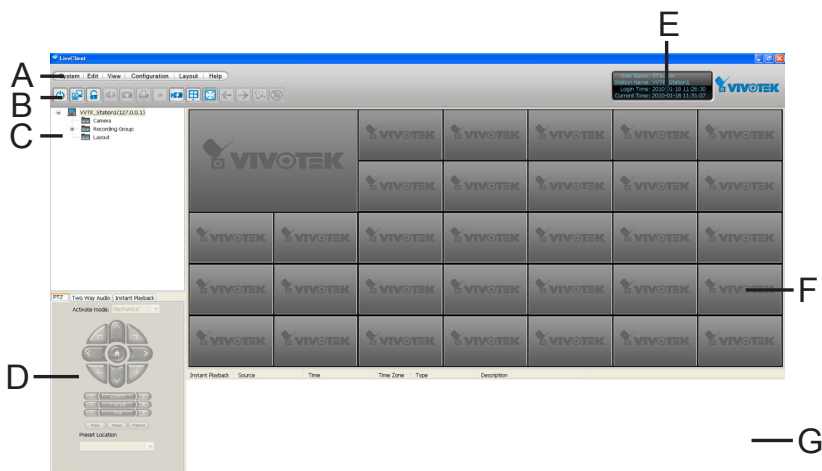
# VAST LiveClient Configuration

## Activating VAST LiveClient

1. After installation, run the **VAST LiveClient** program.
2. Enter the **IP Address**, **User Name**, **Password** and **Communication Port** of the VAST Server.
3. Click **Login**, the monitoring window will be displayed.



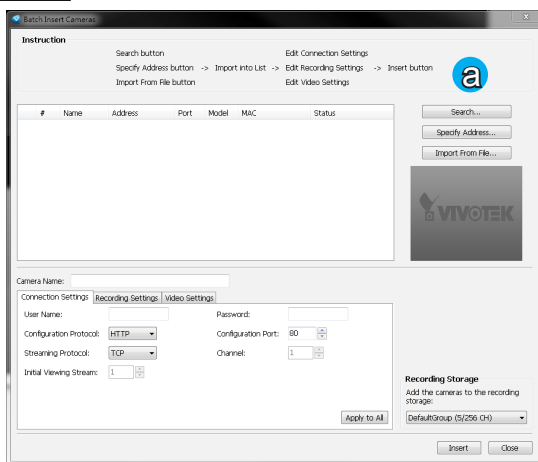
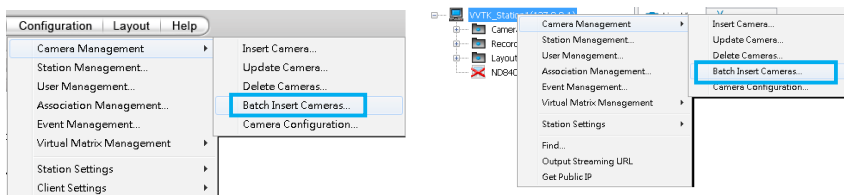
## VAST LiveClient User Interface



- A. Menu bar    B. Quick access bar    C. Hierarchical management tree  
D. Camera control panel    E. Status panel    F. Live video monitoring window    G. Event window

# How to Add Devices

Select a station from the hierarchical management tree; click **Configuration > Camera Management > Batch insert camera** on the menu bar (or **right-click** the target station, then select **Camera Management > Batch insert camera**). The Batch Insert window will pop up.

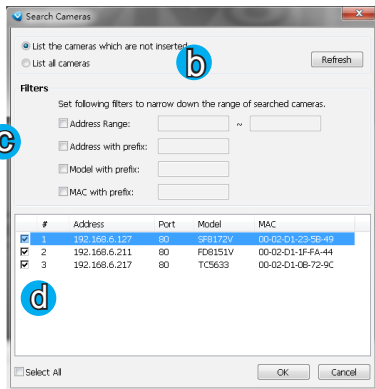


a. Click **Search** to open the **Search Camera** window.

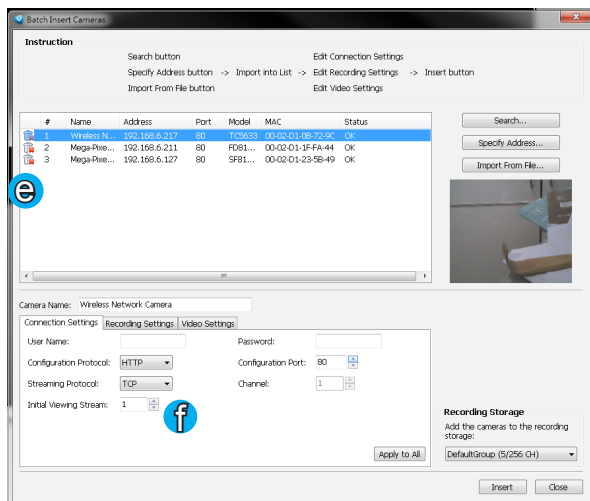
b. You can select to search for "all cameras" or "cameras which are not inserted" using the checkcircles on top.

c. You may also specify the search condition using the following criteria:

- **IP Range:** Enter a range of IP addresses (in Class C dotted-decimal notation) to narrow down the list;
- **IP with prefix:** Type in the prefix of the IP address to narrow down the list.
- **Model with prefix:** The user can type in part of the model name or the complete model name of the cameras to narrow down the search.

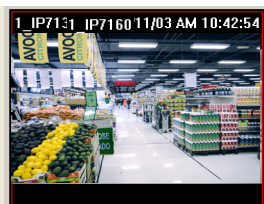


- **MAC with prefix:** You can key in the prefix of the MAC address of the cameras to narrow down the search.
- d. When search is filtered, you can select the cameras each by a single click or check **Select All** to add them in the batch insert list. Then click **OK** to finish searching.
  - e. All selected cameras will be displayed on the batch insert list with the associated information and the connection status. When you click on a camera, a live view will display on the right side for you to identify the cameras on the list. If you want to remove a camera from the list, click the trash can icon to delete it.



- f. At the bottom of the window, there is a field for you to alter the camera settings including Connection Settings and Recording Settings. You can apply the new settings to each camera on the list, or click **Apply to All** to apply the same configurations to all the cameras. For more information about Connection Settings and Recording Settings, please refer to your User Manual.

- g. Click **Exit** to close the camera management window and return to the monitoring window.
- h. Back to the main window, you will find the newly-inserted devices displayed under the station and the live video in the video cell.

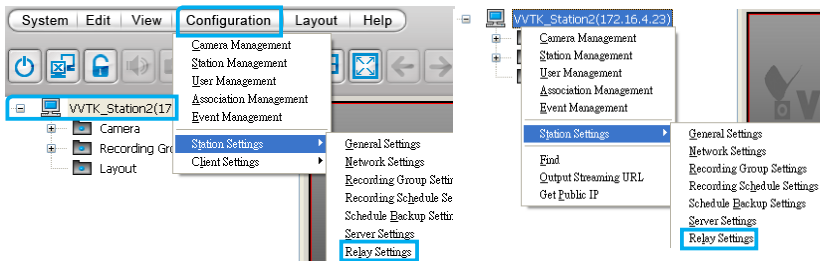


## How to Add Sub-stations

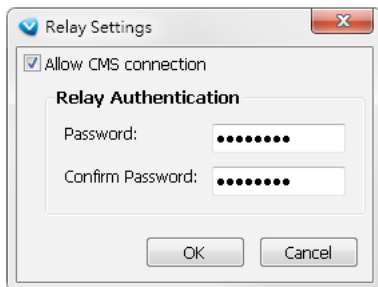
The VAST server allows you to construct a hierarchical management system by adding more sub-stations to the root station.

### Relay Settings

Before adding a sub-station, please follow the instruction below to enable the **Relay Settings** on the sub-station first.

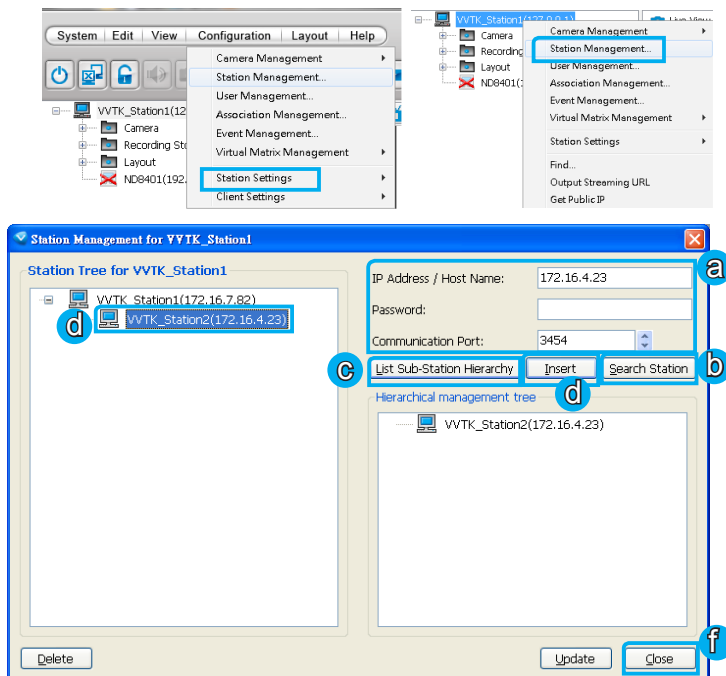


The Relay Settings window will pop up. Check **Allow Relay Connection** and enter a Password. Then click **OK** to enable the settings.



## Insert Sub-stations

Select the station from the hierarchical management tree; click **Configuration > Station Management** on the menu bar (or **right-click** the target station, then select **Station Management**). The station management window will pop up.



- Enter the IP Address and Password (defined in **Relay Settings**).
- You can also click **Search Station** to detect all VAST and ST7501 servers on the LAN.
- Click **List Sub-station Hierchial** button to know if there is any sub-station under it.
- Click **Insert** to add the sub-station to the target station. The sub-station will be displayed under the hierarchical management tree.
- To insert additional sub-stations to the target station, repeat the above steps.
- When completed, click **Close** to exit the Station Management window and return to the main window.
- Back to the main window, you will find the newly-inserted stations displayed under the hierarchical management tree.

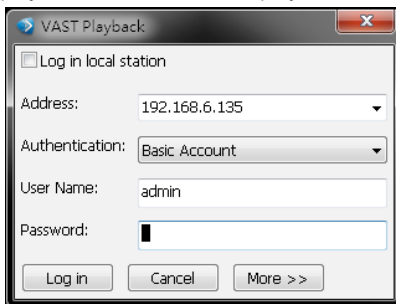




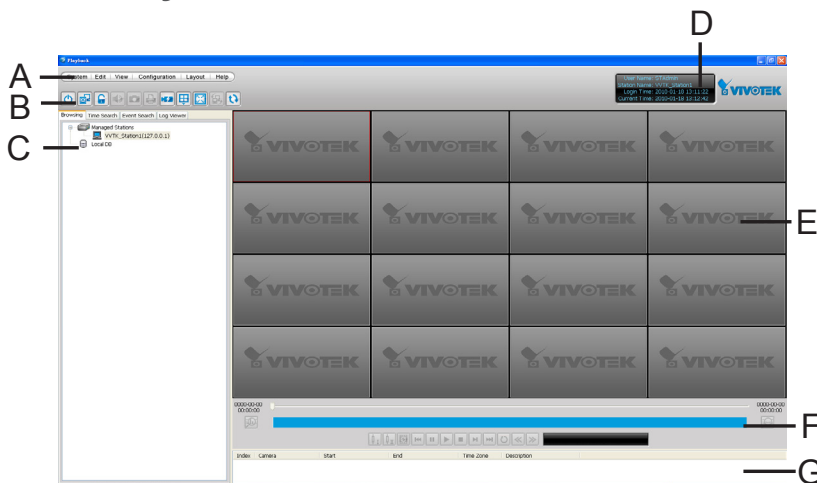
# VAST Playback Configuration

## Activating VAST Playback

1. After installation, run the **VAST Playback** program.
2. Enter the **IP Address**, **User Name**, **Password** and **Communication Port** of the VAST Server.
3. Click **Login**, the playback window will be displayed.



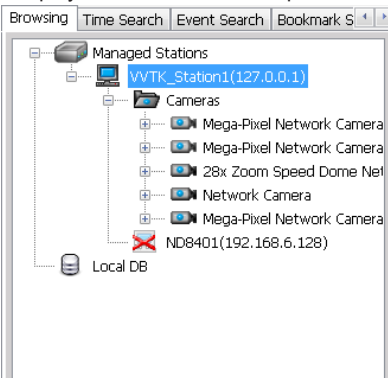
## VAST Playback User Interface



- A. Menu bar    B. Quick access bar    C. Query panel (Browsing/ Time search/ Event search/ Log viewer)    D. Status panel    E. Recorded video playback window    F. Playback control panel    G. Video clips list

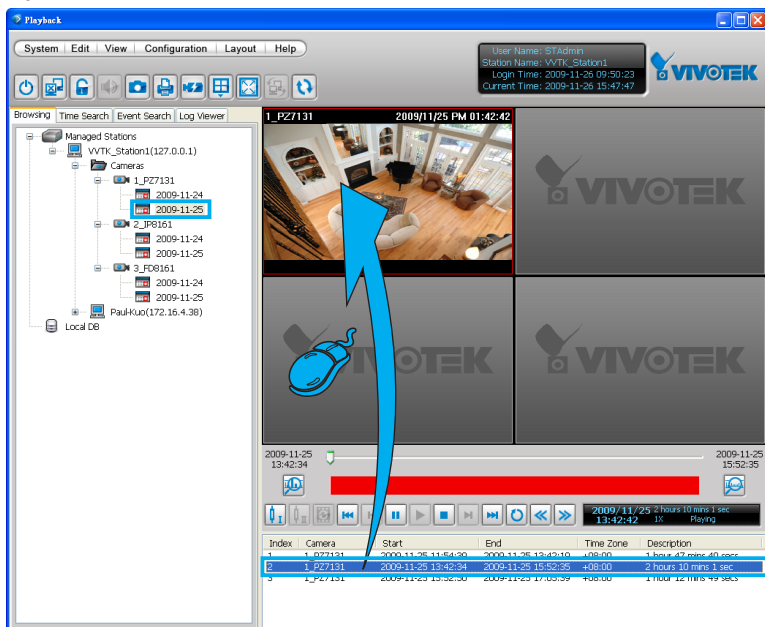
# How to View Recorded Video

1. On the **Browsing** page, **right-click** a station, device, or date item and click **Refresh** to display the recorded video clips.



You can also use the tabbed menus to search for recorded videos via **Time**, **Event**, **Bookmark** menus, and so on.

2. Click a **date** item on the hierarchical management tree. The corresponding recorded video clips will be listed on the video clip list. **Double-click** a video clip or **drag-and-drop** it to one of the video cells.



3. If you want to review all clips recorded on the same date, select a date then **drag-and-drop** it to one of the video cells.

